

What did you have for dinner last night?

That chicken breast, tenderloin, cheeseburger, pork chop or ice cream strengthens the Illinois economy more than you may realize.

ANIMAL AGRICULTURE: An Economic Engine for Illinois

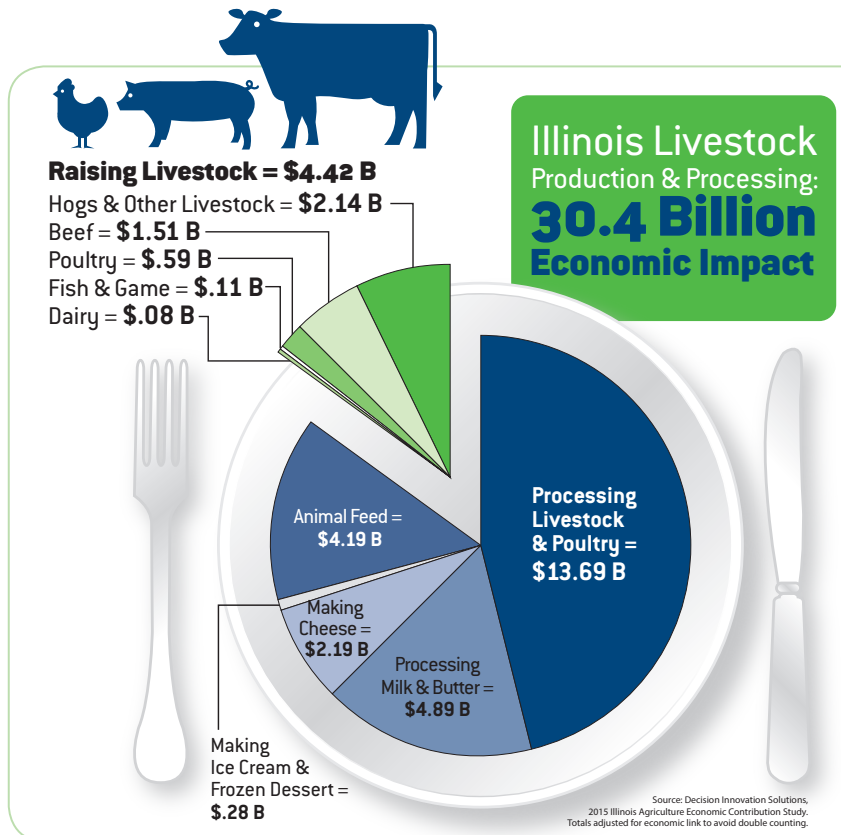
Raising animals and processing feed, beef, pork, chicken, turkey and dairy products contribute vital dollars, jobs and taxes to Illinois, according to the 2015 Illinois Agriculture Economic Contribution Study.

“When you look at inputs like feed, selling products and economic activity generated by profits and wages, livestock production and processing creates a **\$30.4 billion impact** in Illinois,” says Mark Albertson, strategic market development director for the Illinois Soybean Association (ISA), one of the groups who commissioned the study. The study was funded in part by the ISA checkoff program.

Illinois soybeans feed the livestock that grow our economy, according to Albertson. Illinois livestock provide a substantial supply base for meat and dairy processors. Protecting and increasing that base encourages processors to remain in the state.

Illinois soybeans feed the livestock that grow the economy.

The animal agriculture sector employs 59,700 people in Illinois, according to the 2015 Illinois Agriculture Economic Contribution Study.



The animal agriculture sector Albertson describes **employs 59,700 people** in Illinois, according to the study. With strong global demand and efficient access to export markets, Illinois farmers and processors are exploring potential growth – and that’s good for Illinois.

“Livestock farms generate real economic value. Feed is a primary input for raising animals, so crop farmers have strong local demand,” Albertson says. “On the other side of the supply chain, a strong meat and dairy processing sector maintains demand that translates to sales and jobs.”

He says a favorable environment for both processors and animal agriculture in Illinois will ensure the future of this valuable sector.

The Illinois Soybean Association (ISA) checkoff and membership programs represent more than 43,000 soybean farmers in Illinois. The checkoff funds market development, soybean production and profitability research, issues analysis, communications and education. Membership and advocacy efforts support Illinois soybean farmer interests in local areas, Springfield and Washington, D.C., through the Illinois Soybean Growers. ISA programs are designed to ensure Illinois soy is the highest quality, most dependable, sustainable and competitive in the global marketplace.

For more information, visit www.ilsoy.org/animalag.

